

# Redistricting Results

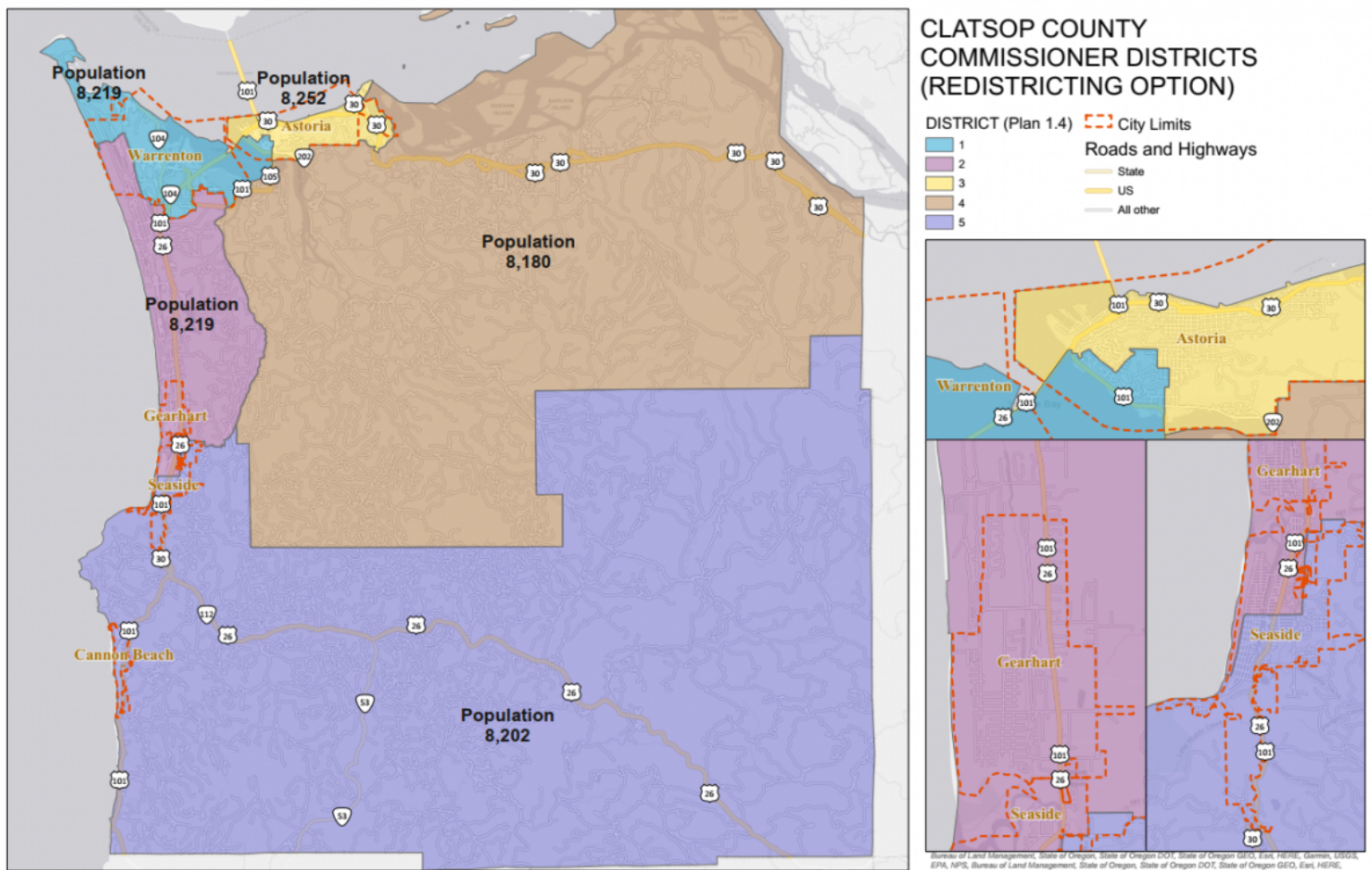
News Release Date  
11-24-2021

The information provided below is the preliminary results based on the feedback received through multiple public forums held virtually along with a public survey.

Clatsop County is continuing to seek feedback regarding the preliminary redistricting maps found below. To provide feedback, please [click here](#) or see the form below.

The [Clatsop County Clerk](#) will be presenting the findings to the Board of Commissioners during the regular meeting on [December 8th](#).

## Option 1 Version 4



## Initial Changes:

- **District 1** - All area along Astoria's North riverfront and downtown is removed from District 1 and goes into District 3. The population around Astoria High School moves into District 1. The Warrenton area remains the same as the current boundaries, except for a small population near Northeast Smith Lake, which moves into District 1.
  - **New Population - 8,219**
  - Original Population - 8,840
- **District 2** - Population increases with District 2 gaining the area West of Fort Clatsop Rd and all population to the West of the Southern half of Lewis and Clark Rd., once it meets Loukas Ln. Population and area around the Cove and Seaside Golf Course move to District 5, including the area Northeast of Seaside. The boundary line between Districts 2 and 5 follows N. Wahanna Rd. and Broadway St. in the Seaside area. A small population near Northeast Smith Lake is removed from the District.
  - **New Population - 8,219**
  - Original Population - 8,746
- **District 3** - Encompasses all of the population within the city limits of Astoria, except for the area near Astoria High School, which is in District 1. Emerald Heights and the area between Tongue Point and John Day Park are added to District 3. All of Lewis & Clark, Youngs River, Olney, and Hwy 101 Business are removed from District 3.
  - **New Population - 8,252**
  - Original Population - 8,424
- **District 4** - No population within the City of Astoria remains in District 4. The population of Emerald Heights and the area between Tongue Point and John Day Park moved into District 3. District 4 gains all of Lewis & Clark, Youngs River, and Olney, with the district boundary being near the junction of Hwy 202 and Elk Mountain Mainline.
  - **New Population - 8,180**
  - Original Population - 7,532
- **District 5** - District 5 gains the population in the Northeast area of Seaside, using N. Wahanna Rd. and Broadway St. as the boundary line. The area of Seaside that's South of Broadway St., including the Cove and Seaside Golf Course moves into District 5.
  - **New Population - 8,202**
  - Original Population - 7,523

## Supporting Documents

[Oregon Kitchen Table Clatsop County Redistricting Summary Report 623.03 KB](#)

[Survey Results 134.76 KB](#)

## Related Links

- [December 8, 2021 Board of Commissioners Agenda Work Session & Regular Meeting](#)

You must have JavaScript enabled to use this form.

## Status message

Sorry... This form is closed to new submissions.