

Clatsop County Wildfire - Information

News Release Date

11-17-2022

Clatsop County Wildfires Updates

Clatsop County has created this webpage to keep you informed on current wildfires in our community and will update it as needed.

We are placing the most current information on the top of the page and separating our updates by date.

FINAL Update: November 21, 2022 - 12:20 p.m.: Clatsop County Wildfires Update

This is the final wildfire update unless there are significant changes.

1. **98 Delta** — Approximately 250 acres. The fire stayed within the current footprint. Crews are working on completing firelines and doing mop-up. It is anticipated that the land will be turned back to the landowner by the end of the shift Tuesday, November 22.
2. **Park Fire** — Approximately 110 acres. The fire is held within the current footprint and the landowner is monitoring it.
3. **Tillamook Head/Square Creek Fire** — Approximately 80 acres. Rural fire departments and the landowner are holding the fire within the current footprint. The landowner is monitoring the incident.
4. **Green Gold** — Approximately 30 acres. The landowner is controlling the fire and holding it within the current footprint. The area is being monitored and patrolled
5. **Middle Mabel** -Turned back over to the landowner as of 6 a.m. this morning.
 - The winds have died down significantly. They are at 0-5 miles an hour out of the east/northeast with an expected wind shift to southwest this afternoon.
 - The level 3 evacuations were lifted yesterday.
 - The Saddle Mountain County Road will remain closed to the public at the intersection of Wawa Mainline Road.

The type 3 team remains in place for 98 Delta. The Oregon Dept. of Forestry, rural fire departments, and landowners are all working well together, doing an excellent job and making great progress.

Neal Bond, incident commander for the 98 Delta fire said, "Thank you for all the help that we have received. It is much appreciated."

For more information visit [Clatsop County](#) or [ODF](#) websites.

FINAL Update: November 21, 2022 - 12:20 p.m.: Clatsop County Wildfires Update

This is the final wildfire update unless there are significant changes.

1. **98 Delta** — Approximately 250 acres. The fire stayed within the current footprint. Crews are working on completing firelines and doing mop up. It is anticipated that the land will be turned back to landowner by end of shift Tuesday, November 22.
2. **Park Fire** — Approximately 110 acres. The fire is holding within current footprint and the landowner is monitoring.
3. **Tillamook Head/Square Creek Fire** — Approximately 80 acres. Rural fire departments and the landowner is holding the fire within current footprint. The landowner is monitoring the incident.
4. **Green Gold** — Approximately 30 acres. The landowner is controlling the fire and holding it within the current footprint. The area is being monitored and patrolled
5. **Middle Mabel** -Turned back over to landowner as of 6 a.m. this morning.
 - The winds have died down significantly. They are at 0-5 miles an hour out of the east/northeast with an expected wind shift to southwest this afternoon.
 - The level 3 evacuations were lifted yesterday.
 - The Saddle Mountain County Road will remain closed to the public at the intersection of Wawa Mainline road.

The type 3 team remains in place for 98 Delta. The Oregon Dept. of Forestry, rural fire departments and landowner are all working well together, doing an excellent job and making great progress.

Neal Bond, incident commander for the 98 Delta fire said, "Thank you for all the help that we have received. It is much appreciated."

For more information visit [Clatsop County](#) or [ODF](#) websites.

November 20, 2022 8 p.m. - Clatsop County Evacuation Update

98 Delta Incident Commander Neal Bond provided an update at approximately 3 p.m. today. "Thanks to the good work by the Oregon Department of Forestry, the landowner and the rural

fire departments, we are able to lift the Level 3 evacuation orders for the homes along Saddle Mountain County road. Please note that Saddle Mountain Road is still closed to the public at this time.”

Evacuation orders are issued by the Clatsop County Sheriff and Sheriff Matt Phillips lifted the order in consultation with ODF.

Saddle Mountain Road is still closed to the public at this time.

For more information visit [Clatsop County](#) or [ODF](#) websites.

November 20, 2022 10:15 a.m. - Clatsop County Update on Air Quality and 5 Wildfires

Five wildfires continue burning in Clatsop County for a total of approximately 520 acres.

At approximately 2:30 p.m. Saturday, Oregon DEQ tweeted “fires in Clatsop County, Oregon may bring periods of heavy intermittent smoke to communities in the North Coast. East winds are forecasted to remain through the weekend.”

Today, Winds are forecast to be 5-8 miles per hour from the east southeast becoming light and shifting in the afternoon.

Although air quality levels are back to healthy levels, that may change later in the day. Clatsop County Emergency Management and Public Health continue monitoring air quality. Residents may monitor their air quality levels at [AirNow.gov](#).

Wildfires

Good progress is being made on all fires, and containment lines continue to be established. The Oregon Department of Forestry, local landowners and fire departments are working together to control the fires prior to Thanksgiving.

The largest of the fires, the 98 Delta Fire about 10 miles east of Gearhart, is estimated at about 250 acres and about 25 percent contained. Fire crews are fortifying containment lines and completing mop up in accessible areas. At this point, not a lot of additional growth is expected out of this fire.

Saddle Mountain County road remains closed to the public at the intersection of Wawa Mainline Road.

Active Wildfires

- **98 Delta** - Near Saddle Mountain Road and is approximately 250 acres

- **Park Fire** - Southwest of Saddle Mountain State Natural Area and is approximately 110 acres. Containment lines have been established on the east side of the fire.
- **Middle Mabel** is around 40 acres and is east/northeast of 98 Delta.

Controlled Wildfires

- **Green Gold** - is approximately 40 acres and is by the border of Clatsop and Columbia Counties.
- **Tillamook Head** - This fire continues burning and the landowner is managing it. Local fire departments and rural fire agencies are keeping it confined so the fire does not expand into other areas. Given the steep terrain, this fire may continue to creep and smolder for a while.

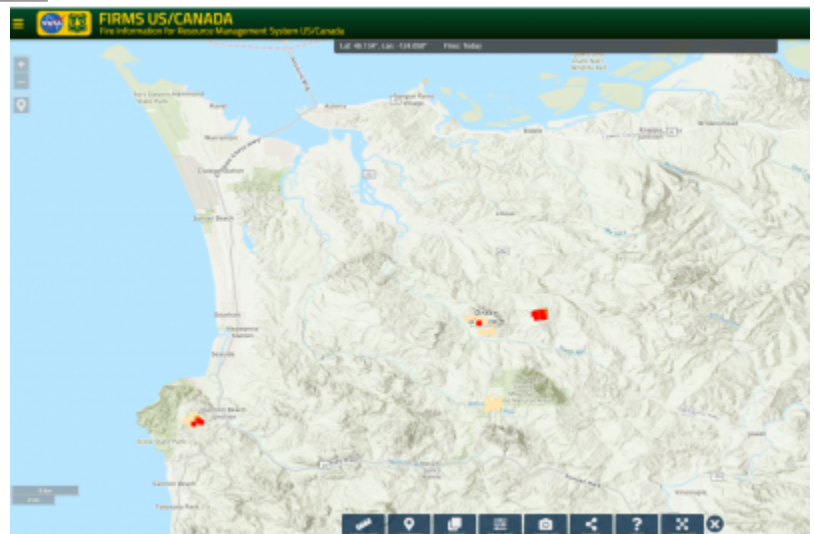
“We want to stress that incredible work is being done to contain these fires, however, they are not out and people need to stay informed,” said Justin Gibbs, Clatsop County emergency management director.

For more information visit [Clatsop County](#) or [ODF](#) websites.

November 19, 2022 - Wildfires & Air Quality Update

Private monitors are picking up **unhealthy air quality for sensitive groups** for Jeffers Garden and near the Astoria Airport. Air quality has returned to healthy levels for the Gearhart and Seaside areas.

At current unhealthy levels, [AirNow.gov](#) states that sensitive groups include people with heart or lung disease, older adults, children and teenagers.



At approximately 2:30 p.m. today, Oregon DEQ tweeted “fires in Clatsop County, Oregon may bring periods of heavy intermittent smoke to communities in the North Coast. East winds are forecasted to remain through the weekend.”

Wildfires

Good progress is being made on all fires, and containment lines continue to be established. The Oregon Department of Forestry, local landowners and fire departments are working together to control the fires prior to Thanksgiving.

The largest of the fires, the 98 Delta Fire about 10 miles east of Gearhart, is estimated at about 300 acres. A type 3 incident management team is in place, along with aerial resources, hand crews, a strike team of engines and excavators. Type 3 incidents means the fire exceeds the capability of local fire services and outside resources needed to be called in.

Several other small fires on state and private forestland are fully or mostly controlled, despite firefighters contending with 15-25 mph east winds with gusts up to 50 mph.

Wind conditions are expected to moderate Sunday, and there's the potential for rain early next week.

Based on that forecast, officials are hopeful that they'll be able to lift the Level 3 evacuations for the four homes at the end of Saddle Mountain County Road in the next couple of days.

Saddle Mountain County road remains closed to the public at the intersection of Wawa Mainline Road.

Active Wildfires

- **98 Delta** — near Saddle Mountain Road
- A wildfire southwest of Saddle Mountain State Natural Area
- [Infrared satellite imaging](#) has detected a new fire east/northeast of 98 Delta

Controlled Wildfires

- **Green Gold** — by the border of Clatsop and Columbia Counties
- **Tillamook Head** - This fire was turned back over to the landowner to manage. Although this may not be an emergent situation, heat associated with a fire needs to be monitored.

Note: The [screenshot](#) to the right was taken at 2:58 p.m. on November 19, 2022.

Friday, November 18, 2022 --Update

2:20 p.m. *FRIDAY, NOV. 18 UPDATE*

98 Delta Wildfire Fire Grows with Level 3 Evacuations

Four homes were at [level 3 evacuation](#) in the 98 Delta wildfire which has grown to 140 acres, according to an Oregon Dept. of Forestry media release dated today.

Clatsop County Public Works staff is closing Saddle Mountain Road at the intersection of Wawa Mainline Road so fire apparatus can safely access the area for firefighting purposes.

Active Wildfires

- 98 Delta – near Saddle Mountain Road
- Green Gold- by the border of Clatsop and Columbia Counties
- A wildfire southwest of Saddle Mountain State Natural Area

Controlled Wildfires

- All responding fire agencies working last night’s Tillamook Head wildfire were cleared early this morning with the land being turned back to the landowner.
- Big 5 Fire is a wildfire south of Brownsmead, off Shingle Mill Road. ODF resources have been deployed.

For more information visit [Clatsop County](#) or [ODF](#) websites.

=====

10:20 a.m. *FRIDAY, NOV. 18 UPDATE*

Clatsop County Wildfires Update

Two wildfires continue burning today in Clatsop County. The causes are under investigation and no evacuation orders are in place.

“Clatsop County air quality levels remain good, however, we are aware that today’s east winds may impact air quality in Seaside and Gearhart,” said Justin Gibbs, Clatsop County emergency management director.

The 98 Delta fire near Green Mountain grew overnight and has an estimated size of about 100 acres. There may be additional fire growth due to persisting weather conditions. The Oregon Department of Forestry has requested additional resources to fight the wildfire.

The Green Gold wildfire by the Clatsop and Columbia county lines is approximately 10 acres.

In Washington, there is a 60-acre wildfire in Chinook that is about 90% contained and another 4.5 acre wildfire that is very visible from Astoria above Dismal Nitch.

For more information visit [Clatsop County](#) or [ODF](#) websites.

=====

7:30 a.m. *FRIDAY, NOV. 18 UPDATE*

Tillamook Head Wildfire Update

At approximately 6 a.m. this morning, fire crews cleared the wildfire in Tillamook Head and turned the property back over to the landowner.

Thursday, November 17, 2022 --Update

11:30 p.m. THURSDAY, NOV. 17 UPDATE

Avoid Tillamook Head - Fire Crews Battling Wildfire

Seaside Fire & Rescue and other fire crews in Clatsop County are responding to an approximately 20-acre wildfire on Tillamook Head as the region experiences an east wind event.

The active blaze is approximately 2.8 miles south of Seaside near the junction of Highway 101 and Highway 26.

*****Authorities are asking the public to remain in place and avoid the area. Further updates will be shared as needed and if circumstances change.*****

Despite cool air temperatures and the current containment, fire conditions remain dangerous.

See the attached City of Seaside media release below for more information.

=====

Wildfire Smoke from Two Fires

Smoke is visible from two wildland fires that are currently being worked by the Oregon Department of Forestry in Clatsop County. There are currently no evacuation orders in place.

One fire is about two miles northwest of Saddle Mountain State Natural Area near Saddle Mountain Road. The second fire is about six miles southeast of Jewell, near the Clatsop and Columbia counties’ border, between Ginger, Stanley, and Selder Creeks.

Clatsop County Emergency Management and Public Health are closely monitoring air quality levels and will provide updates to the public as needed.

For more information, visit the [Oregon Dept. of Forestry website](#).

Supporting Documents

tillamook_head_fire_-_nov_17_2022_-_press_release.docx.pdf 389.52 KB