

NEHALEM COUNTY PARK (RED BLUFF)

Location:	Red Bluff Road off of Hwy. 26, between mileposts 20-21, Elsie area
Size:	49.27 acres
Ownership Status:	County
Land-use zone:	Recreation Management (RM)
Classification:	Forest Area

Description/Natural Features:

The tract is mostly an even-aged stand of 175 to 250-year-old Douglas fir trees. Many specimens are 4 to 5 feet in diameter and approximately 190 feet tall. Density is not uniform. There are younger Douglas fir, red cedar, western hemlock, and spruce of mixed ages, and snags are present. The understory consists of red alder, big leaf maple, vine maple, cascara, salmonberry, thimbleberry, huckleberry, elderberry, wild rose, ferns and Indian plum. The presence of devil's club in several locations indicates springs or wet areas. Numerous shade-tolerating wildflowers such as trilliums are present. A complete botanic inventory has not been completed.



The site is near but not contiguous to the South Fork of the Nehalem River. The site is relatively flat with some drop-off on the eastern side.

Facility Inventory:

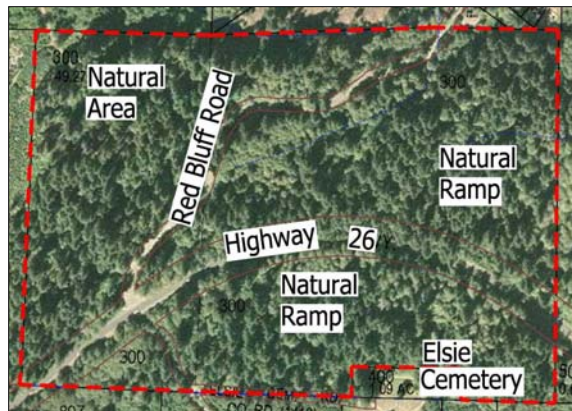
- Undeveloped

Cultural/Historical Significance:

This is one of the most significant intact stands of Douglas fir in the county.

Geological Significance:

The site is near but not contiguous to the South Fork of the Nehalem River. The site is relatively flat with some drop-off on the eastern side.



History:

Board of Commissioners designated site as parkland in 1937 for public benefit and preservation for future generations.

Acquisition by County:

Property was obtained by the county through delinquent tax payments.