

Public Works Resiliency Project

October 2020

Emergency Preparedness, Response, and Recovery

- Should a natural disaster occur Clatsop County plays a critical role in the county-wide emergency preparedness, response, and recovery.
- The county is responsible for protecting and preserving life and property as well as coordinating longer-term rebuilding and recovery efforts.
- Several county departments play an essential role in all emergency preparedness and recovery efforts including:
 - Assessment & Taxation
 - Emergency Management
 - Community Development
 - Public Health
 - Public Works
 - Sheriff's Office

Planning

- Clatsop County's 2012 Strategic Plan identifies a project named "Countywide Bypass, Truck, Evacuation Route" where the County, cities of Astoria, Warrenton and Seaside considered improvements to HWY 101 and the development of an alternate route, earthquake or tsunami evacuation road or by-pass.
- In the 2015 TSP it was mentioned "Having redundant transportation routes increases the likelihood of maintaining system connectivity during and after such an event is therefore an important part of Clatsop County's overall resilience."
- The Clatsop County Board of Commissioners have prioritized the relocation of essential buildings and infrastructure outside the tsunami inundation zone in an effort to optimize response during our community's time of need.

Process

Phase 1: Potential Acquisition of the "Sort Yard"

Purchase Sale Agreement (PSA) was signed July 2020 and the County has a 180 days to complete the due diligence process at no cost to the County.

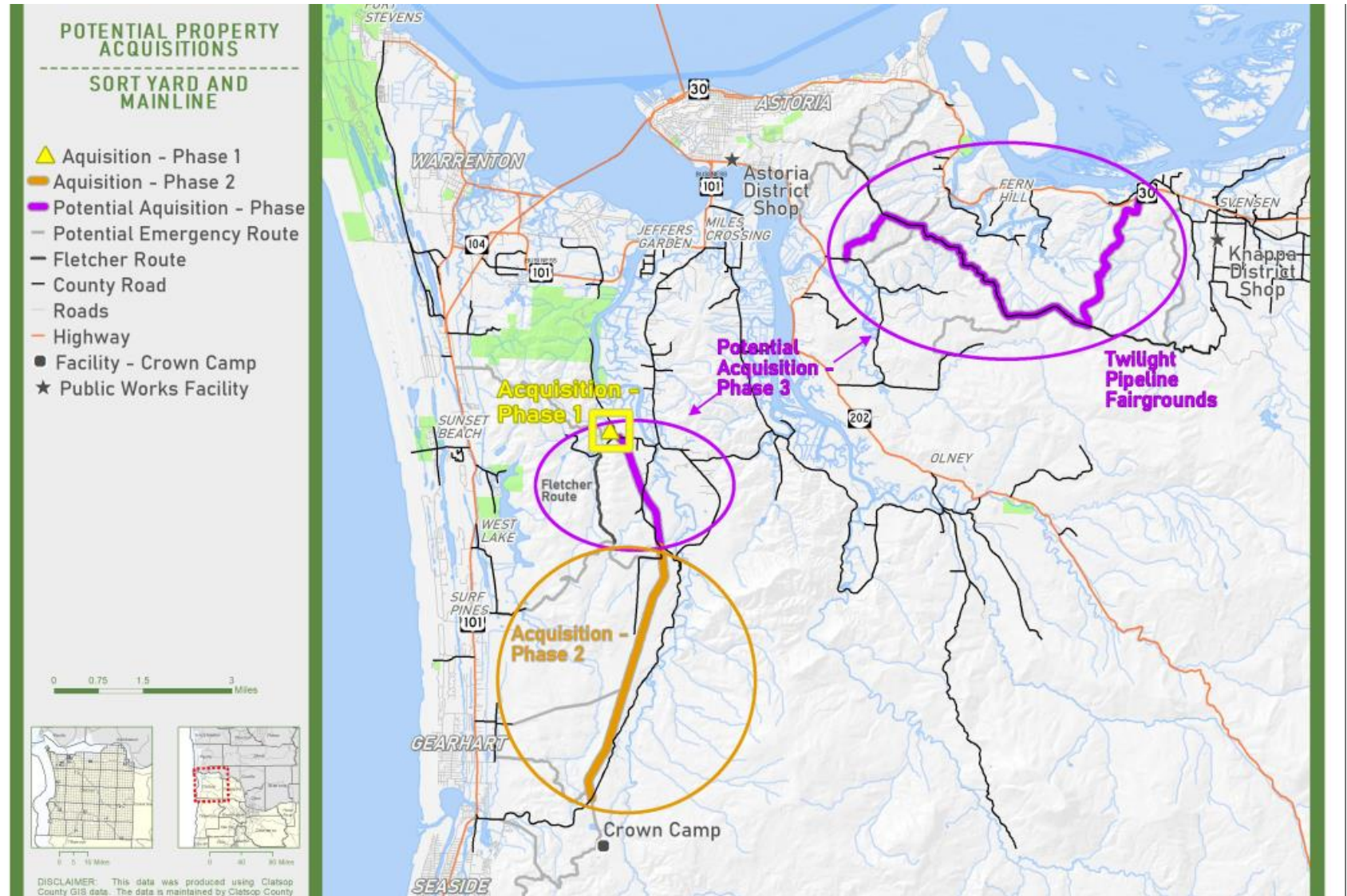
Phase 2: Potential Acquisition of the south portion of the mainline

Letter of Intent (LOI) was signed May 2020 and the County has 20 months to complete the due diligence process at no cost to the County.

Potential Future Phases:

Twilight/Pipeline

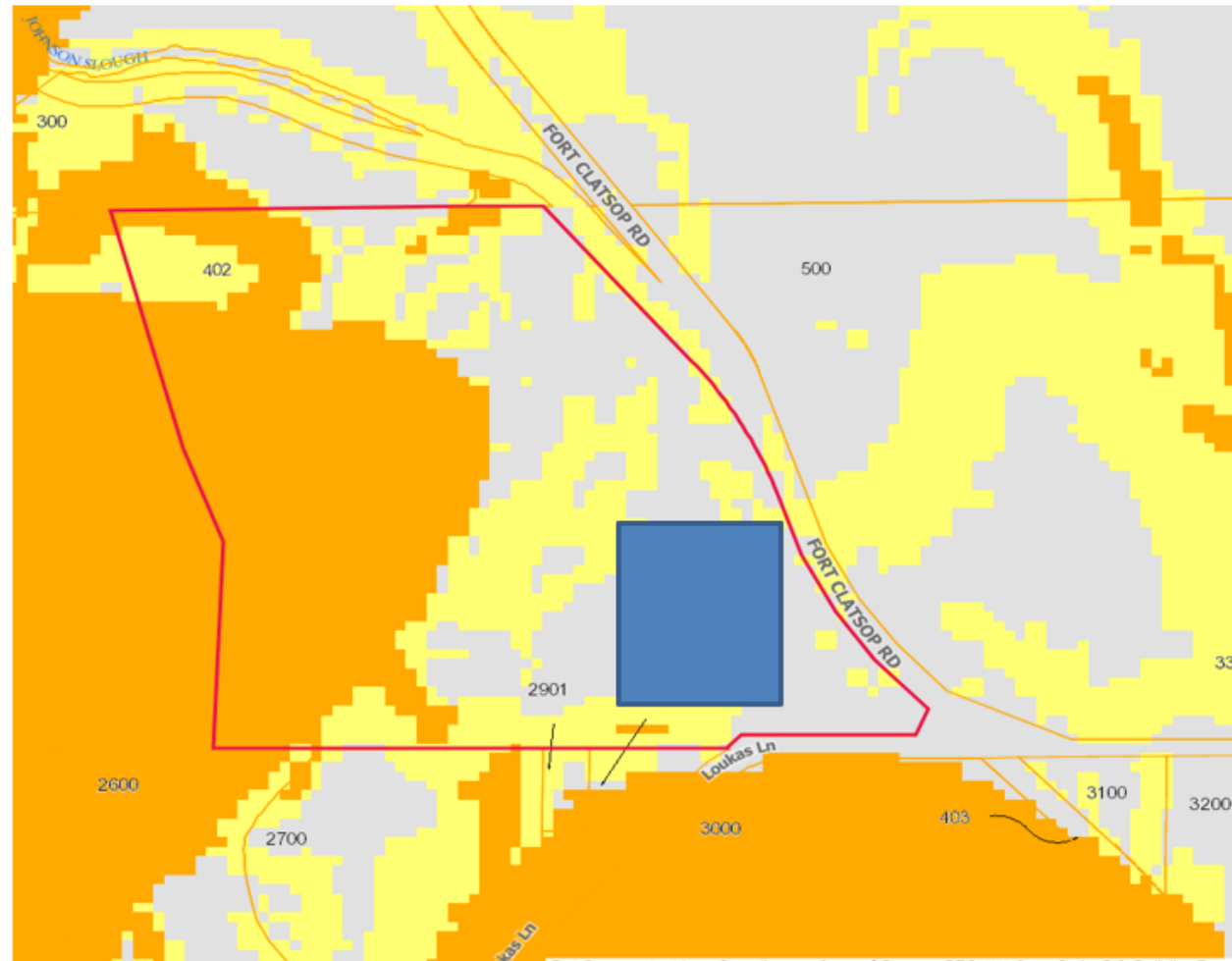
North Mainline



Facility Relocation Criteria

- Out of the inundation zone
- Availability of land
- Available public access
- Adequate size and shape for operations (15-50 acres) to accommodate current and future storage of materials, debris removal, equipment circulation, etc.
- Located on the west side of both the Lewis & Clark and Young's River
- Terrain and geological hazards
- Availability of multiple ways to and from facility for redundant access in a potential emergency
- Availability of utilities to serve the site
- Avoidance of extensive and costly wetland mitigation
- If goal exceptions are required, select the property that would most likely receive approval – Further conversations with DLCD over has shown that they are supportive of relocating both Public Works and the EOC. Specific properties have really not been the influencing factor.
- A site that would not be negatively impacted by future surrounding development (traffic, safety, noise, etc.)
- Potential ability to co-locate with other county departments (Planning, Building Codes, etc.)
- Overall cost to develop a turnkey site

Proposed Facility Landslide Susceptibility



Landslide Susceptibility Matrix:

Graphic display of how data sets are combined to create the final landslide susceptibility zones.

	Class	Landslide Density Combine: ① Generalized Geologic Map + ② Landslide Inventory			Landslides ③ Existing Landslides
		Low (less than 7%)	Moderate (between 7% and 17%)	High (greater than 17%)	Existing Landslides
Slope Prone to Landsliding Combine:	Low (less than 1 STD)	Low	Moderate	High	Very High
	Moderate	Moderate	High	Very High	Very High

Low

Landsliding unlikely. Areas classified as Landslide Density = Low (less than 7%) and areas classified as Slopes Prone to Landsliding = Low.

Moderate

Landsliding possible. Areas classified as Landslide Density = Low to Moderate (less than 17%) and areas classified as Slopes Prone to Landsliding = Moderate OR areas classified as Landslide Density = Moderate (7%-17%) and areas classified as Slopes Prone to Landsliding = Low.

High

Landsliding likely. Areas classified as Landslide Density = High (greater than 17%) and areas classified as Slopes Prone to Landsliding = Low and Moderate OR areas classified as Landslide Density = Low and Moderate (less than 17%) and areas classified as Slopes Prone to Landsliding = High.

Timeline

YEAR	PHASE 1 Sort Yard	PHASE 2 Mainline South	Future Phases
2020	Purchase/Due Diligence/ Begin Goal Exception Process		Community Outreach
2021	Due Diligence/Facility Design/Complete Goal Exception Process/Permitting	Purchase/Due Diligence	
2022	Begin Shop Improvements		
2023	Construction		
2024	Shops Complete	Begin Construction	
2025	Offices Complete	Construction	
2026		Construction	
2027		Construction	
2028		Construction	
2029		Construction	
2030		Construction Complete	

Questionnaire Results

1. Do you support moving the Public Works Facility out of the tsunami inundation zone?
☐ Yes 69% ☐ No 28% ☐ Not sure 3%
2. Do you think that the Lewis & Clark Sorting Yard would be an appropriate location for a relocated Public Works Facility?
☐ Yes 30% ☐ No 25% ☐ Not sure 46%
3. How proactive should the County be in pursuing emergency and alternate routes in preparation for a seismic event?
☐ Very Proactive 56% ☐ Somewhat Proactive 30%
☐ Not Proactive 12% ☐ Not sure 2%

Questionnaire Results - Continued

4. Do you think that the County should acquire existing private roads for alternate or emergency routes if they are currently available?
- ☐ Yes 66% ☐ No 29% ☐ Not sure 5%
5. If yes, should these alternate or emergency routes be improved to County Standards?
- ☐ Yes 54% ☐ No 19% ☐ Not applicable 17% ☐ Not sure 10%
6. If these alternate routes were obtained and improved should they be open for general public access?
- ☐ Yes 64% ☐ No 28% ☐ Not sure 8%

Questionnaire Results - Continued

7. Please rank the following potential projects in order of importance with 1 being the most important and 4 being the least important.

Public Works Facility Relocation

- ☐ 1 - 44% ☐ 2 - 7% ☐ 3 - 4% ☐ 4 - 25%
☐ Not sure – 20%

Pipe Line Road

- ☐ 1 - 17% ☐ 2 - 16.6% ☐ 3 - 11% ☐ 4 - 27%
☐ Not sure – 29%

Questionnaire Results - Continued

7. Please rank the following potential projects in order of importance with 1 being the most important and 4 being the least important.

Lewis & Clark Mainline N Section

- ☐ 1 - 7% ☐ 2 - 22% ☐ 3 - 24% ☐ 4 - 15%
- ☐ Not sure - 32%

Lewis & Clark Mainline S Section

- ☐ 1 - 8% ☐ 2 - 16% ☐ 3 - 19% ☐ 4 - 25%
- ☐ Not sure - 32%

Next Steps

<https://www.co.clatsop.or.us/publicworks/page/resiliency-project>

County staff will continue to schedule community outreach meetings and will be posting updates to the process on the county website Public Works page under “The Resiliency Project”.

The Resiliency Project

IF YOU DID NOT RECIEVE A QUESTIONNAIRE IN THE MAIL, PLEASE CONTACT BY EMAILING hmathen@co.clatsop.or.us or CALLING (503)-325-1000 EXT. 1314. Thank you.

The Resiliency Project calls for relocating the county's Public Works facility and establishing alternative routes for emergency evacuation and delivery of vital services.

In anticipation of a catastrophic event, the Clatsop County Commissioners prioritized the relocation of essential county buildings and infrastructure outside the tsunami inundation zone to optimize emergency response. A top priority for relocation is the Public Works facility, which sits in the inundation zone at its current location at 1100 Olney Ave. in Astoria.

In conjunction with evaluating the relocation of the Public Works facility, the county has also studied potential evacuation and alternate travel routes to move people, equipment and supplies in the event of a major disaster that could disrupt other roads and highways.

Our first public meeting to discuss this process was held virtually on Thursday August 13th at 5:30pm. The recorded video of the meeting can be found below under Web Links. Letters will be sent out with a paper questionnaire to be mailed back if the online version is not available to you. If the online version is available to you, please use your required unique ID that comes on the paper questionnaire in the mail, the questionnaire cannot be completed online without the unique ID. [Click here](#) to complete the questionnaire.

August 13, 2020 Meeting Summary

In that meeting, a presentation to introduce the project's intent, timeline and cost analysis was presented followed by public questioning and comment. A poll was also taken to give an idea of what areas are most important and what actions the County should prioritize. At the end of the meeting, the County announced that a letter and questionnaire has been sent Countywide and will be arriving in mail boxes this week. The questionnaire is designed to obtain feedback from the public on this matter. The questionnaire can be completed and mailed back or completed online. For more information on the questionnaire, visit: The Resiliency Project page.

The next meeting will be scheduled when we have received the majority of the questionnaires back via mail or online. That meeting is estimated to be scheduled at the end of September or beginning of October 2020. An email notification will be sent out along with a news release and Facebook post to notify the public of this meeting.

See the link below to read more about the Resiliency Project.

- Releases
- + Resources & Permits
- Sign up for Email Subscriptions
- The Resiliency Project
 - Background
 - Timeline
 - Map
 - Resiliency Project FAQs
 - + Resiliency Project Questionnaire
- + Roads
- + County Engineer
- + Surveyor
- Maps - GIS
- Customer Feedback
- Contact Information

Public Works
Ted McLean, Director