

**CLATSOP COUNTY, OREGON  
PROPOSED BUDGET  
FY 2011-12**

**Board of Commissioners**  
***Dirk Rohne, Chairperson***

***Peter Huhtala, Vice Chair***

***Scott Lee, Commissioner***

***Patricia Roberts, Commissioner***

***Debra Birkby, Commissioner***

***Lay Budget***  
**Committee Members**  
***Cary Johnson***

***Dan Bartlett***

***Russ Farmer***

***Joe Bakkensen***

***Tim Crawford***

**Submitted By:**

***Duane Cole, County Manager***

**ADMINISTRATIVE STAFF**

***Duane Cole***

***County Manager***

***Nicole Williams***

***Assistant County Manager***

***Glenn Ahrens***

***4-H & Extension Staff Chair***

***M. L. Robison***

***Finance, Assessment & Taxation Director***

***Cathie Garber***

***County Clerk***

***Josh Marquis***

***District Attorney***

***Margo Lalich***

***Public Health Director***

***Janet Evans***

***Juvenile Director***

***Ed Wegner***

***Transportation & Development Director***

***Tom Bergin***

***Sheriff***

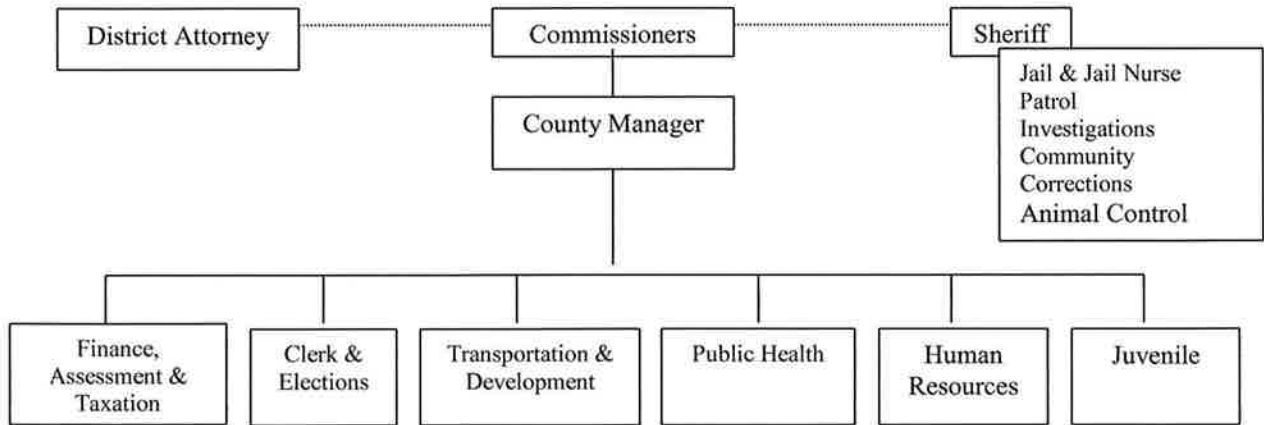
Clatsop County  
Organizational Charts by Department



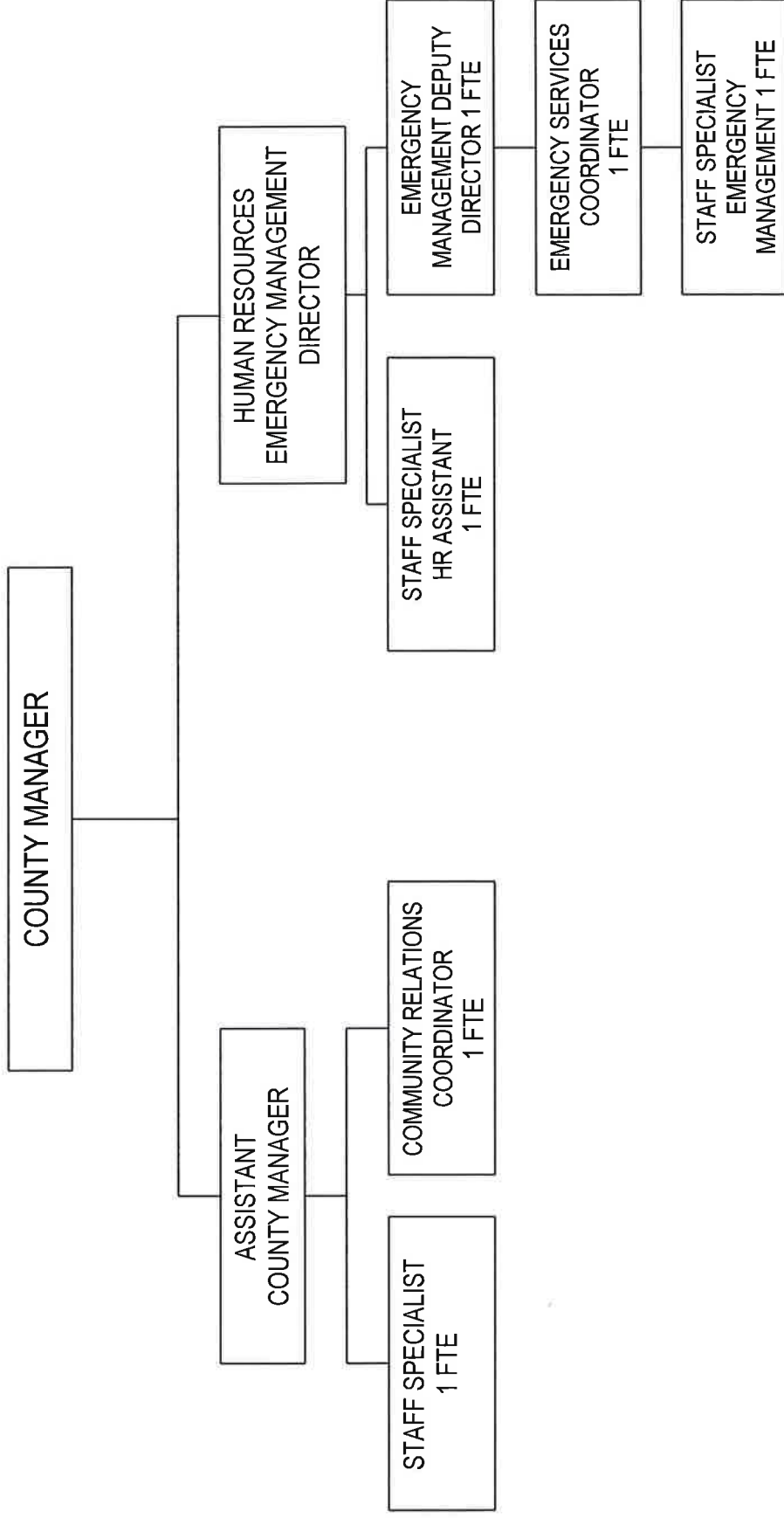


2011-2012

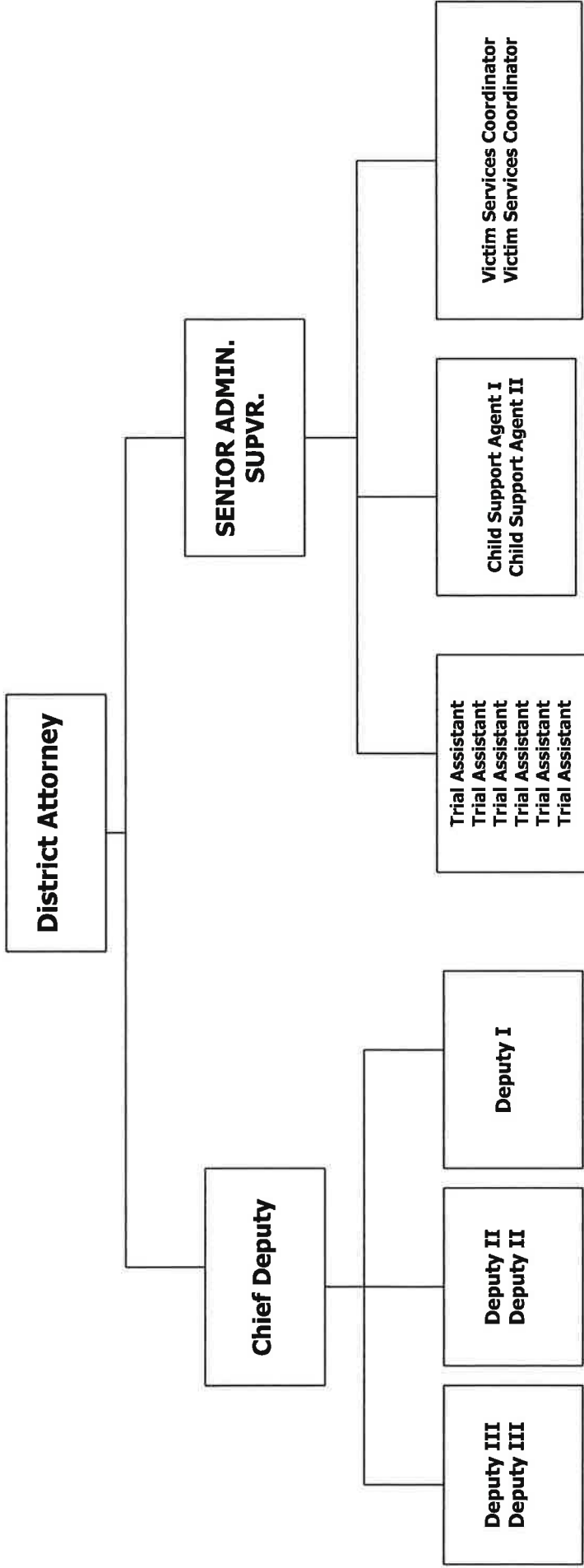
PROPOSED CLATSOP COUNTY ORGANIZATIONAL CHART



# COUNTY MANAGER'S OFFICE Organizational Chart



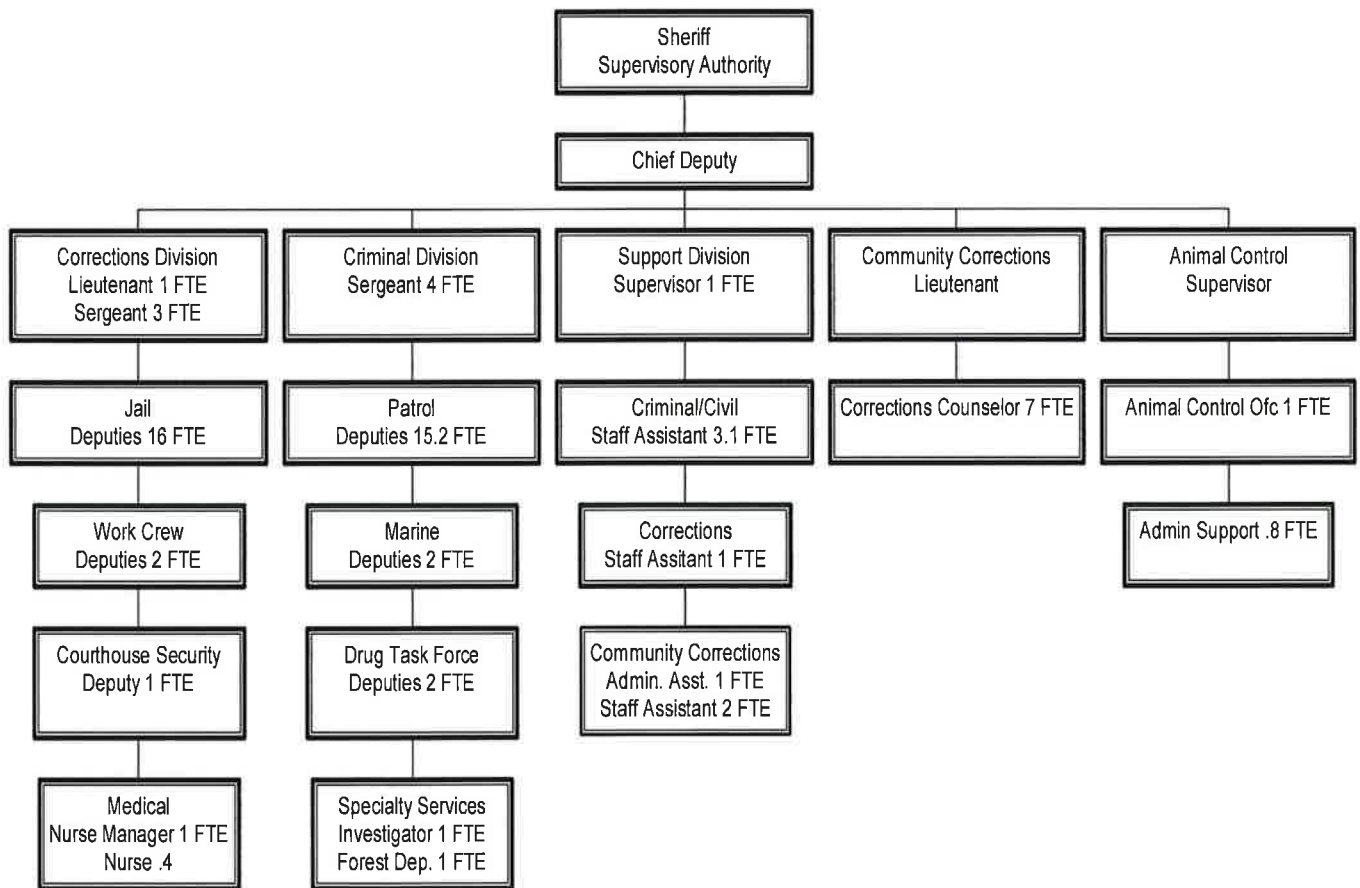
# DISTRICT ATTORNEY'S OFFICE



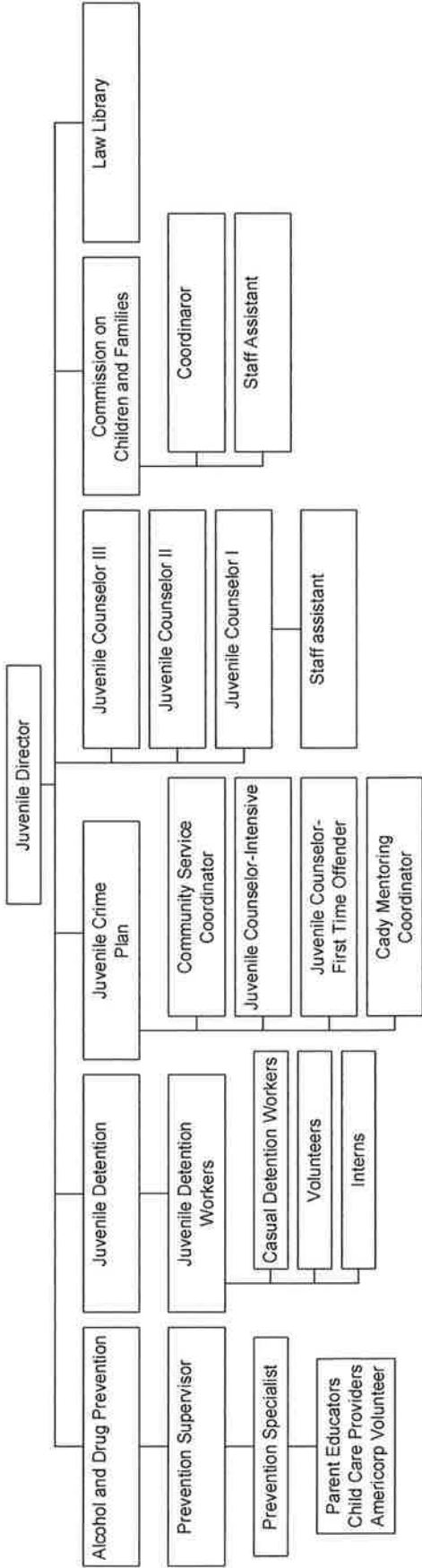
# Sheriff's Office

## Proposed Organizational Chart

Sheriff's Office Organizational Chart

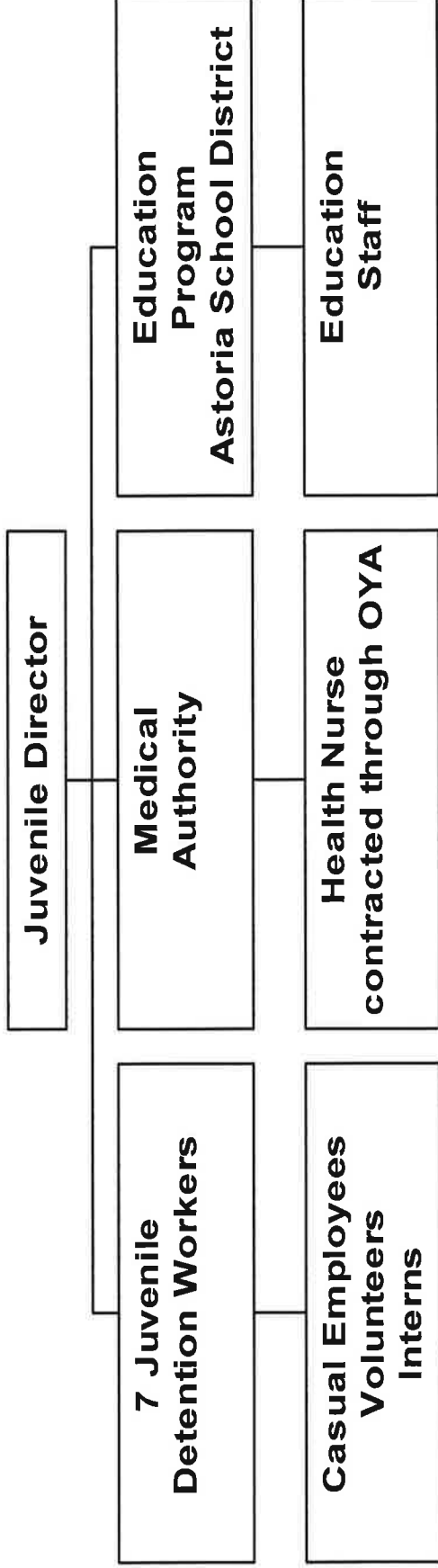


Juvenile Department

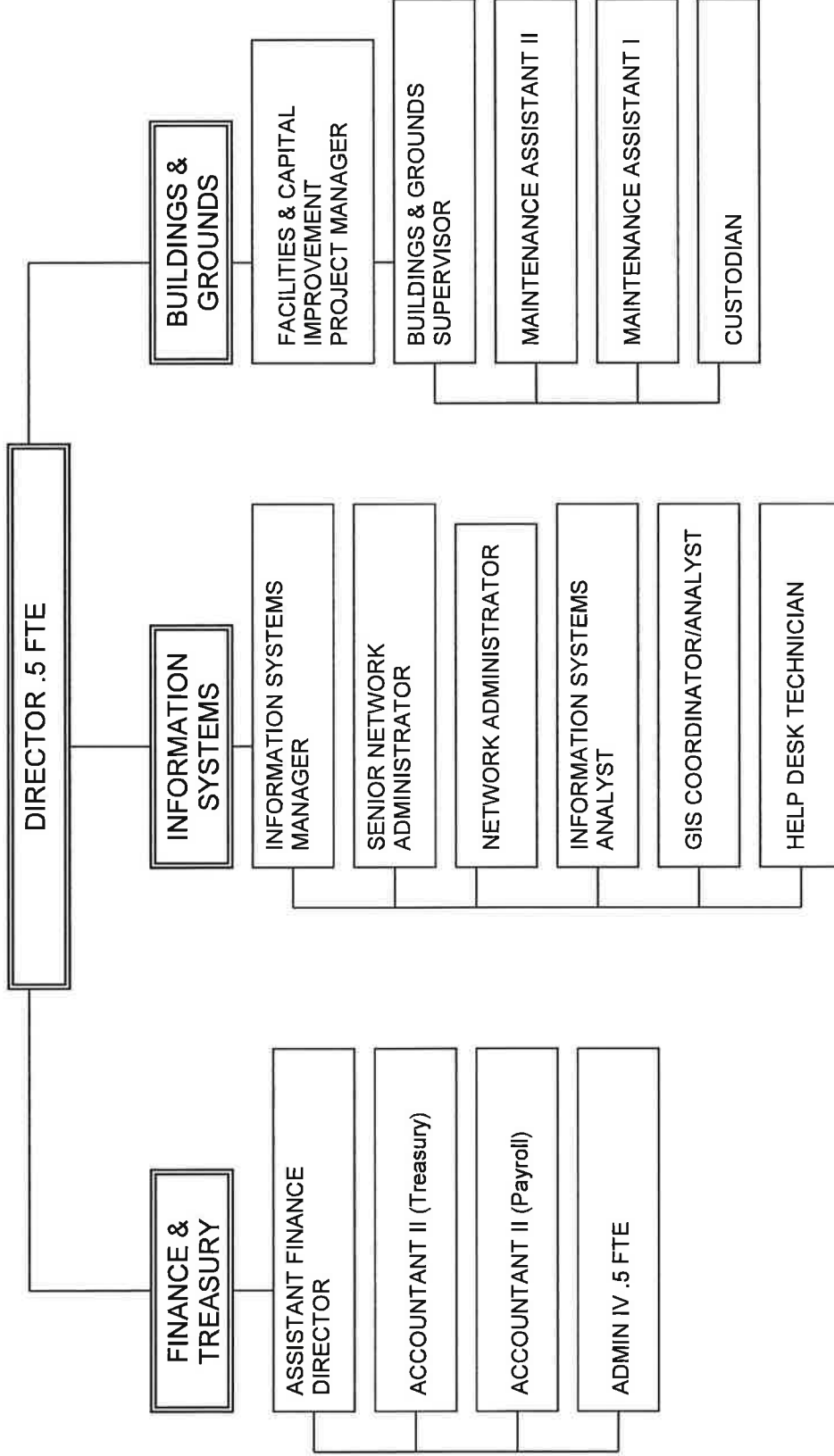


# **YOUNG'S BAY DETENTION**

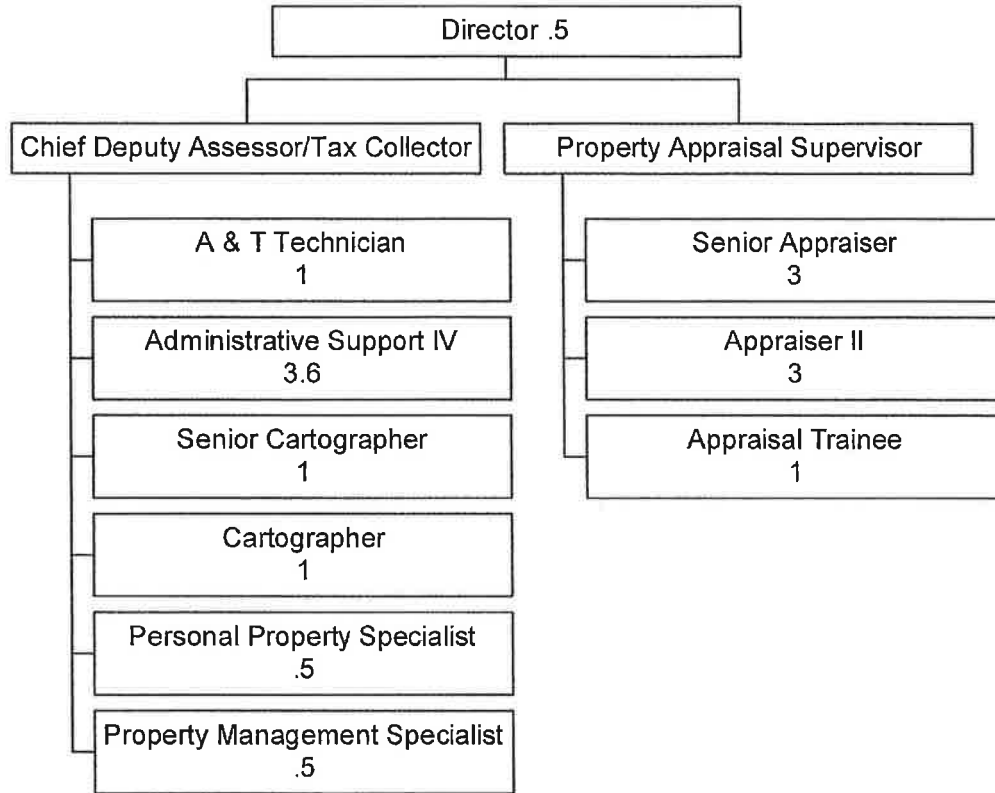
## **Organizational Chart**



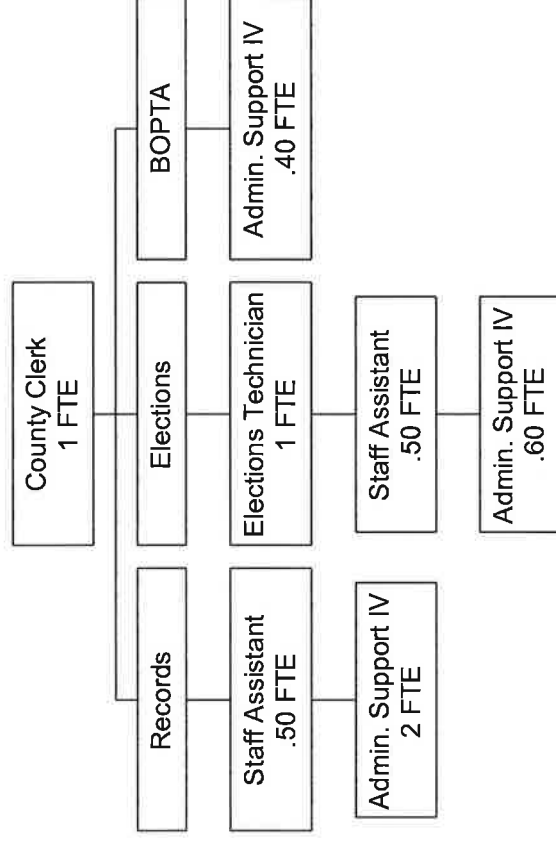
CLATSOP COUNTY  
 Finance & Treasury, Information Systems, and Buildings & Grounds



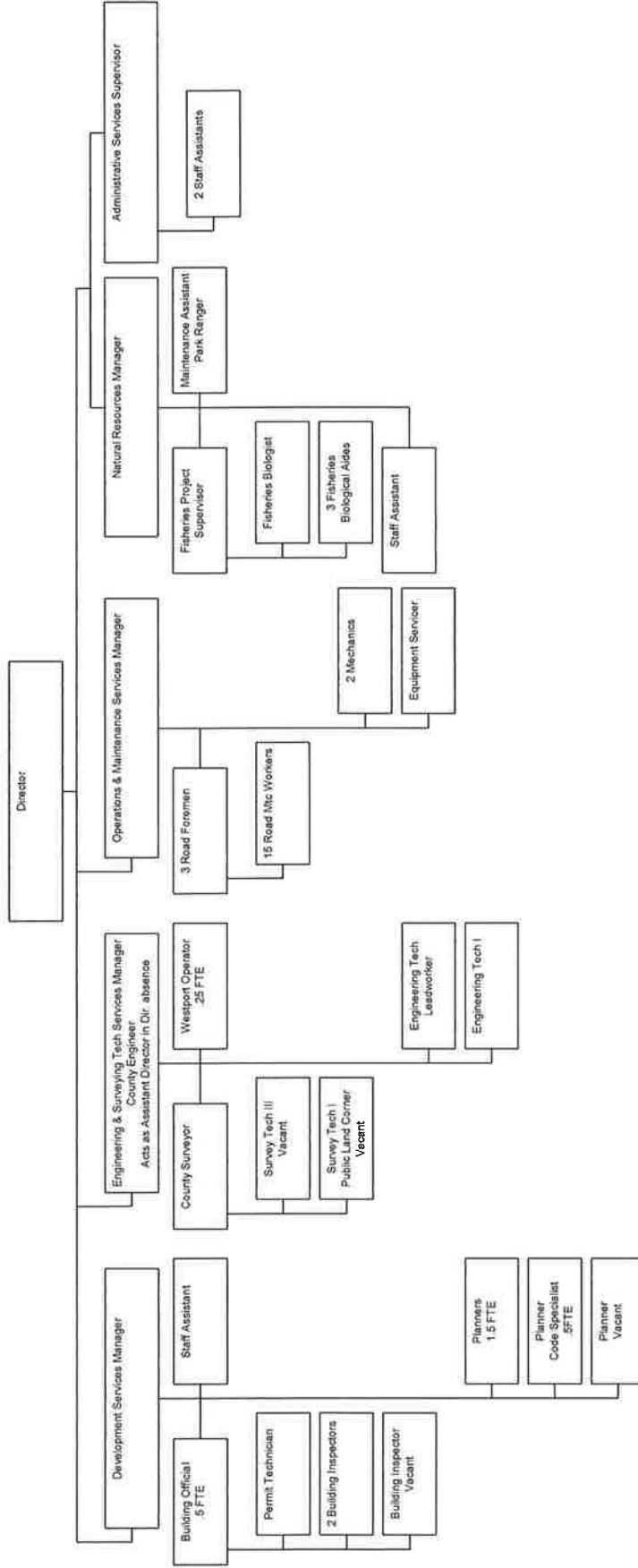
# ASSESSMENT & TAXATION

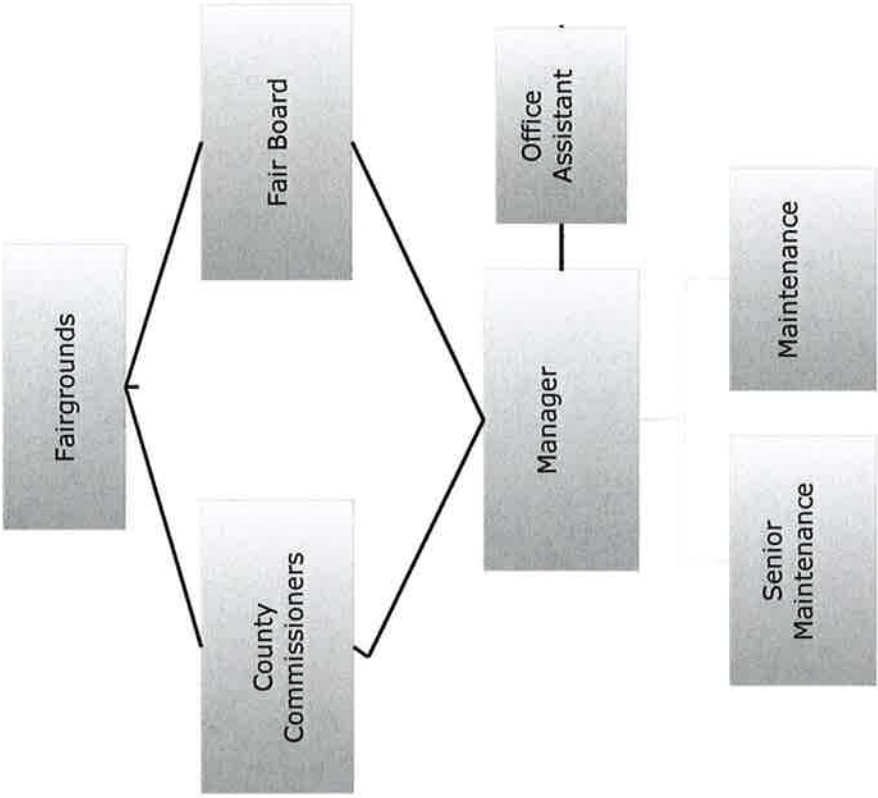


# Clerk, Records & Elections



# Department of Transportation and Development







# Clatsop County 4-H & Extension Service District Organizational Chart

